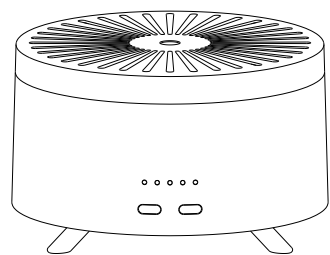


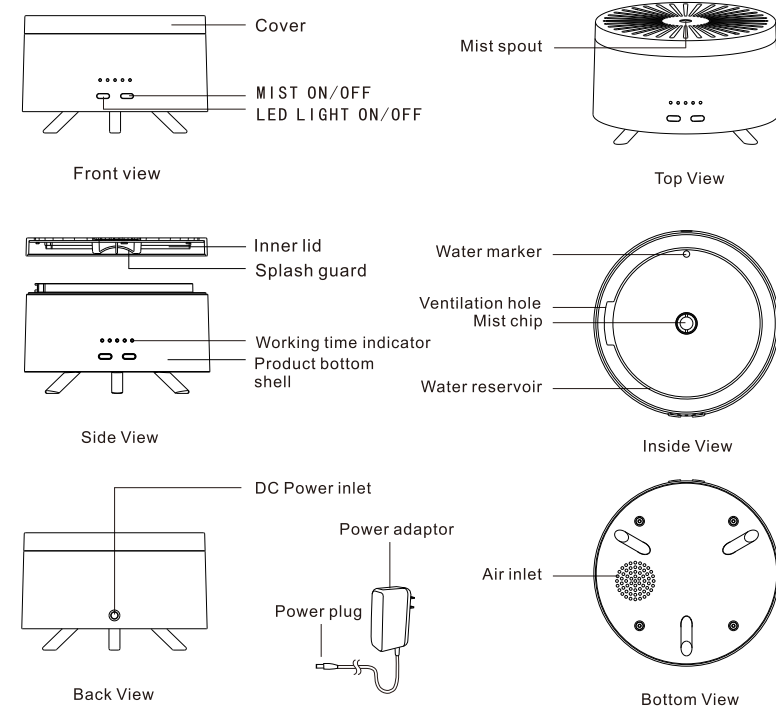
**USER MANUAL**



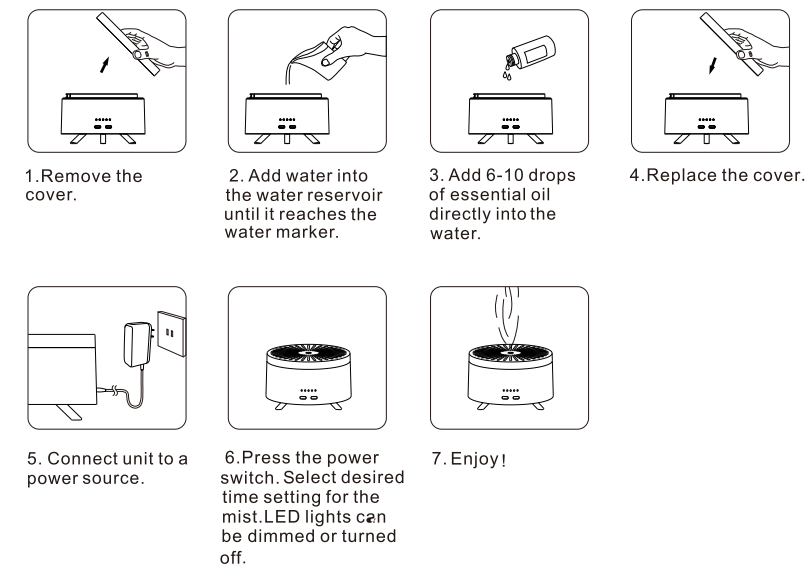
**AromaFuse Diffuser**  
PZ-UA20

Thank you for purchasing this product. Please read the user manual carefully before usage.

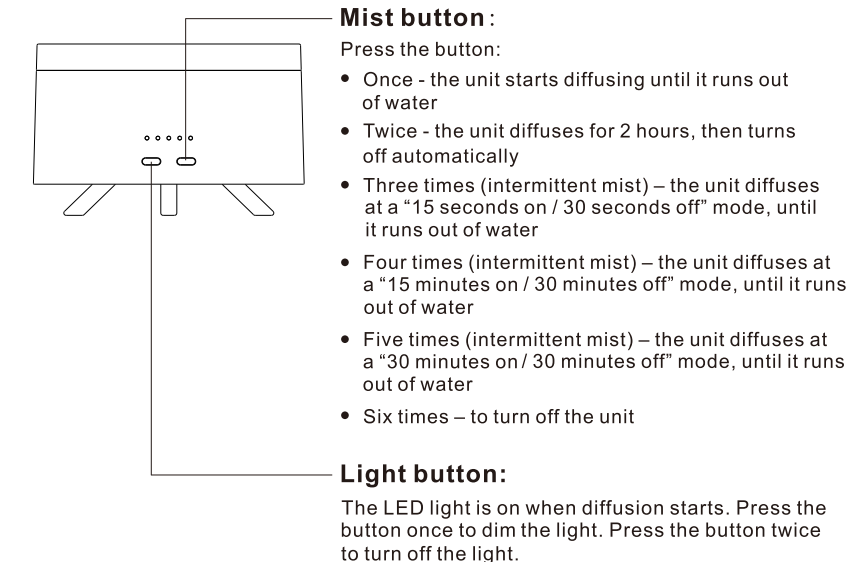
**[ Overview ]**



**[ Operation ]**



**[ Functionality ]**



**[ Notes ]**

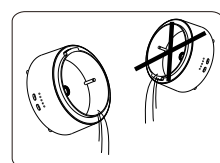
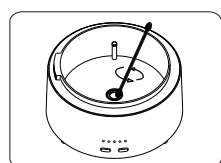
- Factors affecting the mist amount: water, humidity, temperature, and air flow.
- Use 100% pure natural essential oil only.
- Clean the unit before switching to a different essential oil.

**[ Safety Rules ]**

The following safety rules should be observed while using this product.

- Never use the product for any purposes other than those listed on this manual.
- Use only the power plug contained in the package to avoid damaging the product.
- Do not pour out water with the air inlet underneath.
- If the unit will not be used for an extended period or needs to be relocated, unplug the power adaptor, dispose of the water, and wipe the unit clean before storage.
- If smoke or a burning smell is detected, immediately turn off the power.
- The water level should not exceed the red mark.
- The unit should be placed on a level solid surface. Do not place on carpets, rugs, uneven, or unstable surfaces.
- Use tap water or spring water, but do not use distilled water.
- Avoid moving the unit while in use.
- The product is by no means a toy for children. Do not let them play with it.
- When unplugging the power adaptor, set your hand on the adaptor body instead of pulling the wire.
- Avoid placing the product in direct sunshine, close to a refrigerator, fan, or other hot environments.
- The unit should not be operated solely by an underage person, anyone who is lacking the experience, or the basic knowledge about the product unless he or she is under supervision or guidance.
- This product is not a piece of medical equipment. Directly inhaling the aroma mist from the spout is prohibited.

**[ Cleaning and Maintenance ]**



⚠ When disposing water, make sure the air duct outlet is not subject to spilling. Pour the water out from the opposite side (of the air duct outlet).

- Power off the unit and unplug the power adaptor.
  - Clean the water tank and mist chip no less than twice a week.
  - Use a cotton cloth applied with a small amount of neutral cleaner to clean the ultrasonic mist chip, and then rinse and dry.
- Note: Never use erosive detergent to clean the mist chip; otherwise damage will occur.**

**[ Product Warranty ]**

- This product is under a one year limited warranty, provided the operation and maintenance strictly follow the instructions in the manual.
- The warranty is valid for one year starting from the date of purchase. Free coverage of the warranty is provided to product malfunctions under the normal operating conditions. Please contact Plant Therapy for replacing and repairing.
- To contact us, call 800-917-6577 or email cs@planttherapy.com with the serial number and order number.

Product Name	AromaFuse	Model	PZ-UA20		
Warranty	One year since purchase date	Purchase Date	Month	Day	Year
User Information		Merchant Information			

**[ Product Dimensions ]**

Product Name:	AromaFuse	Power:	12W
Model:	PZ-UA20	Atomized Particle Diameter:	5 μm
Dimensions:	174x174x110mm	Water quality:	Room temperature tap water, or bottled spring water
Material:	PP	Container Capacity:	380ml
Weight:	410g	Coverage Area:	50 sq. m.
Power Source:	DC24V 500mA	Environment:	For Indoor Use Only

**[ Trouble Shooting ]**

Symptom	Possible Cause	Solution
Unit won't turn on or turns off earlier than expected	Is there enough water in the tank? Is the power cord connected properly?	Add water to the scale line. Disconnect, check cables, and re-connect carefully.
No mist or abnormal mist	Normal LED light but no mist.	1. Check the water level in the product water tank. The water level should not be higher than the red scale line. 2. Ensure that tap water or mineral water is added.
	No mist when covered with lid.	1. Avoid placing the product on soft surfaces such as sponge-like objects. This will block the air inlet at the bottom. 2. Determine if the fan is working. If it is not working, please contact Plant Therapy for replacement.
	Does the mist chip have oil residue? Is there dirt on the air inlet at the bottom of the product?	Please follow the instruction on cleaning and maintenance. Clean the air inlet. Partially blocked inlet will adversely affect misting performance.
Water leak	Is the inner lid missing?	Replace or adjust the inner lid orientation. Under these conditions, the mist will precipitate rapidly.
	Is the temperature too low or humidity too high?	Under these circumstances, the mist will condense quickly into water droplets.